

Test Yourself 2

Anagrams

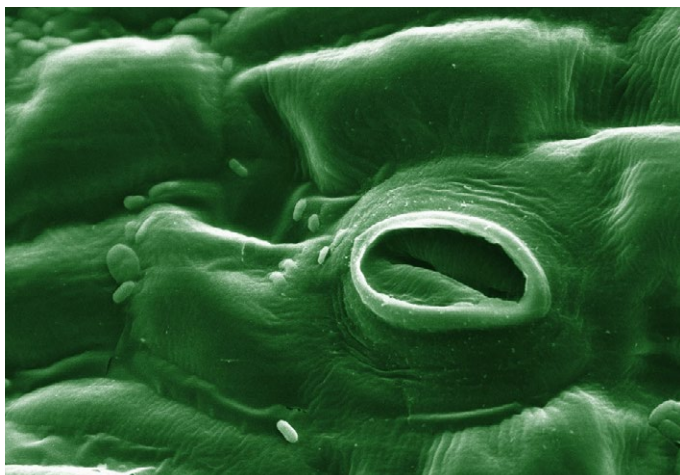
Rearrange the letters to name the plant minerals.

Mumsagine _____

Sphatesoph _____

Spatmusio _____

Staintre _____



What Am I?

True or False

	T	F
Oxygen is a reactant in photosynthesis.		
Stomata are pores found on the top side of leaves.		
Glucose and oxygen are the products of photosynthesis.		
Stomata are opened and closed by the guard cells and allow gases to diffuse into the leaf.		
Palisade cells contain a lot of chloroplasts.		



Test Yourself 2 Answers

Anagrams

Rearrange the letters to name the plant minerals.

Mumsagine **Magnesium**

Sphatesoph **Phosphates**

Spatmusio **Potassium**

Staintre **Nitrates**

What Am I?

stomata

True or False

	T	F
Oxygen is a reactant in photosynthesis.		✓
Stomata are pores found on the top side of leaves.		✓
Glucose and oxygen are the products of photosynthesis.	✓	
Stomata are opened and closed by the guard cells and allow gases to diffuse into the leaf.	✓	
Palisade cells contain a lot of chloroplasts.	✓	

